

*Triple A*  
*Angus*

**AAA** *BULL SALE*

*Acquire the Angus Advantage*

**26<sup>th</sup>**

*Bull Sale*

Saturday, April 8, 2023 • 1:00 p.m.

Johnstone Auction Mart • Moose Jaw, Saskatchewan

**OFFERING YEARLING BLACK & RED ANGUS BULLS**

# Welcome

## FROM TRIPLE A ANGUS

Welcome cattle enthusiasts,

Thank you to our past buyers and bidders for trusting our programs and to the T Bar C crew for managing our sale. We always offer a very diverse offering of genetics with this sales group.

Welcome Gutzke Ranch and 4K Angus as new consignors to the sale.

**The bulls on offer for 2023 are exceptional. Whether you are looking for a bull for a purebred operation, performance, calving ease or one that can be used on both cows and heifers, there is a bull to fit into any program. You can view the bulls any time at Hagerty Livestock prior to the sale.**

Contact any of the consignors or sales management to discuss the groups sales offering to assist you in selecting a bull to suit your needs.

A special thank you to Larry, Fay, Trevor and Leanne from Hagerty Livestock for the opportunity to put our bulls in a common place to be fed under the same environmental conditions.

*Triple AAA Sales Group*

## FROM THE DESK AT T BAR C

Welcome to the 26th Annual Triple A Angus Bull Sale on Saturday April 8, 2023 at Johnstone Auction Mart, Moose Jaw, Saskatchewan featuring Black and Red Angus Yearling Bulls. This offering is presented by eight leading Angus seedstock producers and the bulls have been developed at Hagerty Livestock all under the same management conditions.

When you consider the outstanding contribution of these breeders and what this sale has provided the livestock industry, it is overwhelming. No doubt the number of sires is countless, but most of the daughters of these sires have made foundation females for ranchers in the industry... wow! Every contributor to this event use a combination of A.I. and hand picked walking bulls to fulfil and supply new genetic influence for their many repeat customers. The A.I. sires are amongst the most proven sires... proven for calving ease yet maintaining performance traits. In this powerful offering, you will find high performance bulls through weaning and yearling and a host of calving ease sires for your heifer breeding pastures.

Plan to be with us for the 26th AAA, and refresh your herd bull battery with high quality Angus breeding stock. The bulls will be on display at the Auction Mart the day prior or stop by Hagerty's and preview them any time prior. Feel to call any of these breeders to discuss the bulls they have on offer.

If we may be of assistance prior to, or on sale day, feel free to contact any of the T Bar Team or myself, we will help you in a professional manner.

*Chris Poley*



### Sale Management

T Bar C Cattle Co. Ltd.

Box 2330

Warman, SK S0K 4S0

Office: 306-933-4200

Fax: 306-934-0744

info@tbarc.com www.tbarc.com



**Chris Poley**  
306-220-5006



**Shane Michelson**  
403-363-9973



**Ben Wright**  
519-374-3335



# ACQUIRE THE ANGUS ADVANTAGE

## AT THE 26TH TRIPLE "A" BULL SALE

### 64 YEARLING BULLS ON OFFER

Lunch at 12:00 Noon • Sale at 1:00 PM • Saturday, April 8, 2023

Johnstone Auction Mart, Moose Jaw, Saskatchewan

#### Auctioneer

Chris Poley \_\_\_\_\_ 306-220-5006

#### Ringmen

Shane Michelson \_\_\_\_\_ 403-363-9973

Levi Rimke \_\_\_\_\_ 204-851-4515

Nate Marin \_\_\_\_\_ 306-869-7130

#### Livestock Insurance

Bonnie Thompson \_\_\_\_\_ 306-483-7311

Alameda Agencies

View the catalogue online at  
**www.BuyAgro.com**

#### LUNCH SPONSORED BY



#### 2022 BREED AVERAGES

	BW	WW	YW	Milk	SC	CE	MCE
BLK	2.0	52	92	23	0.84	3.5	6.7
RED	1.1	40	68	24	0.68	2.7	5.3

#### DEFINITIONS:

- BW – Birth Weight – all weights are measured in pounds.
- 205 – Adjusted Weaning Weight
- AOD – Age of Dam
- Proj Wt. – Estimate of Sale Day Weight

#### BID ONLINE WITH DLMS

Can't make it to the sale? **Watch & Bid Online.**

With DLMS you can Watch, Listen & Bid on your computer just like you were there with online bidding over the internet

#### Instructions for Viewing And Bidding At the Sale

Visit [www.dlms.ca](http://www.dlms.ca), Fill out the registration form located under registration and sign-up for your free user account to select a username and password.

**BIDDERS** - To be approved as a bidder, Log in and click BUYER APPROVAL tab, select the sale you are interested in bidding at and click sign up.

For more information or for help getting approved Call:

Mark Shologan - 780-699-5082 or DLMS Purebred Team 780.991-3025

Direct Livestock Marketing Systems  
We're Making the Connection  
**DLMS**  
[www.dlms.ca](http://www.dlms.ca)

*To find an agent or sale near you today  
visit [www.dlms.ca](http://www.dlms.ca)  
Purebred Sales • Daily Presort Sales  
Direct Off-farm Sales every Thursdays at 10:00 am*

## TRIPLE A CONSIGNORS

Bell Angus	Ken & Sheila Bell	306-591-7792	Lots 39 - 45
Cottonwood Angus	Brett Gaube	306-537-4710	Lots 1 - 7
Gutzke Ranch	Brodie Gutzke	306-861-6576	Lots 18 - 23
Hi Low Angus	Dan, Erin & Cassidy Howell	306-731-2940 cell: 306-581-7606	Lots 46 - 57
Nu-Horizon Angus	Kieran, Deb & Kodie Doetzel	306-331-0384 cell: 403-357-7648	Lots 8 - 17
Triple H Angus	Perry, Dawn & Cory Hart	306-723-4832	Lots 29 - 32, 100 - 106
Willowview Angus	Ken & Sandy Harle	306-539-8185	Lots 24 - 28
4K Angus	Tim, Paulette, Ellen & Scott Keys	306-939-4499	Lots 33 - 38



Cottonwood Angus was one of the founding consignors and would like to welcome everyone to the 26th anniversary of the AAA Bull Sale. I'm looking forward to seeing you and I'm always available to answer any questions.  
Brett Gaube: 306 537 4710



## 1 COTTONWOOD BLOODLINE 173K

Male 2282502 RTBG 173K 23/01/2022

S A V RAINFALL 6846  
**S A V BLOODLINE 9578**  
S A V EMBLYNETTE 2369  
JL PRESEASON 5071  
**JL BALLOT 8294**  
JL BALLOT 5146  
COLEMAN CHARLO 0256  
S A V BLACKCAP MAY 4136  
S A V 707 RITO 9969  
S A V EMBLYNETTE 7566  
S A V FOUR SEASONS 5231  
JL LADY 07043  
S A V THUNDERBIRD 9061 DMF  
JL BALLOT 1087

Here is the real package, he has stacked genetics with S A V Bloodline out of S A V Rainfall. On the dam side, she goes back on the top side to S A V Four Seasons and on the bottom side to S A V Thunderbird.

EPDS	BW	WW	YW	MILK	CE	MCE
	1.8	63	112	16	3	10
BW:	SOTW:	EOTW:	ADG:	WPDA:	PROJ WT:	AOD:
74 lbs.	872 lbs.	1172 lbs.	3.57 lbs.	3.08 lbs.	1322 lbs.	4



## 2 COTTONWOOD GUARANTEE

Male 2282667 RTBG 04K 28/01/2022

CONNEALY PAYRAISE  
**CRAWFORD GUARANTEE 9137**  
CRAWFORD MS ARMORY D40

JCC J.D. 9C  
**COTTONWOOD TIPTOP 04H**  
COTTONWOOD TIPTOP 50C

BASIN PAYWEIGHT 1682  
PRIDE FAIR OF CONANGA 351  
CONNEALY ARMORY  
G A R NEW DAY N2290  
S A V INTERNATIONAL 2020  
WERNER BLACK ANGEL 1299  
BLAIRS NEW GENERATION 303Z  
COTTONWOOD TIPTOP 4Z

EPDS	BW	WW	YW	MILK	CE	MCE
	1.6	59	115	28	7	5
BW:	SOTW:	EOTW:	ADG:	WPDA:	PROJ WT:	AOD:
74 lbs.	762 lbs.	1096 lbs.	3.98 lbs.	2.91 lbs.	1246 lbs.	2

Crawford Guarantee son, has calving ease. This bulls dam got hardware in early August and weaned him off, he is a gaining 3.98lbs per day.



## 3 COTTONWOOD TRAPPER 70K

Male 2282489 RTBG 70K 15/01/2022

PAINTROCK MOUNTAIN MAN  
**PAINTROCK TRAPPER**  
EMULOUS OF PAINTROCK 93-9

JCC J.D. 9C  
**COTTONWOOD BELLE 70E**  
CFS BELLE 64N

KESSLERS FRONTMAN R001  
ENCHANTRESS OF PR 3635  
ISAACS ALLIANCE 7161  
PAINTROCK EMULOUS 446-6  
S A V INTERNATIONAL 2020  
WERNER BLACK ANGEL 1299  
GBT RANGER 3L  
CFS BELLE 45L

EPDS	BW	WW	YW	MILK	CE	MCE
	2	50	86	23	1	3
BW:	SOTW:	EOTW:	ADG:	WPDA:	PROJ WT:	AOD:
79 lbs.	814 lbs.	1058 lbs.	2.90 lbs.	2.72 lbs.	1208 lbs.	5

Heifer bull with calving ease.



## 4 COTTONWOOD TRAPPER 90K

Male 2282496 RTBG 90K 21/01/2022

PAINTROCK MOUNTAIN MAN  
**PAINTROCK TRAPPER**  
EMULOUS OF PAINTROCK 93-9

JCC J.D. 9C  
**COTTONWOOD BELLE 90G**  
COTTONWOOD BELLE 59C

KESSLERS FRONTMAN R001  
ENCHANTRESS OF PR 3635  
ISAACS ALLIANCE 7161  
PAINTROCK EMULOUS 446-6  
S A V INTERNATIONAL 2020  
WERNER BLACK ANGEL 1299  
BLAIRS NEW GENERATION 303Z  
WILLOWVIEW BELLE 82N

EPDS	BW	WW	YW	MILK	CE	MCE
	0.6	52	92	23	5	5
BW:	SOTW:	EOTW:	ADG:	WPDA:	PROJ WT:	AOD:
71 lbs.	922 lbs.	1158 lbs.	2.81 lbs.	3.02 lbs.	1308 lbs.	3

Here's an outcross that has calving ease and a smooth made package.





## SONS OF JCC JD 9C

These are the sixth set of bulls sired by JCC JD 9C He has an outstanding feet and claws. His calves continue to exhibit the same tremendous strength of body and easy fleshing with moderate birth weights. JD is siring calves that are getting the job done.



5

COTTONWOOD JD 59K

Male 2282448 RTBG 59K 07/02/2022

S A V INTERNATIONAL 2020  
JCC J.D. 9C  
WERNER BLACK ANGEL 1299  
BLAIRS NEW GENERATION 303Z  
COTTONWOOD BELLE 59C  
WILLOWVIEW BELLE 82N  
S A V HARVESTOR 0338  
S A V EMBLYNETTE 5483  
S A V NET WORTH 4200  
CLEARWATER BLACK ANGEL 395  
DUFF NEW GENERATION 6107  
MV F TIBBIE 60M  
HXL STOCKMAN 2K  
COTTONWOOD BELLE 11A

EPDS	BW	WW	YW	MILK	CE	MCE
	3.2	51	90	25	1	3
BW:	SOTW:	EOTW:	ADG:	WPDA:	PROJ WT:	AOD:
85 lbs.	932 lbs.	1268 lbs.	4.00 lbs.	3.46 lbs.	1418 lbs.	7

The tiptop cow family have outstanding feet and udders and longevity. They out do them selves each and every year.



6

COTTONWOOD JD 63K

Male 2282451 RTBG 63K 14/02/2022

S A V INTERNATIONAL 2020  
JCC J.D. 9C  
WERNER BLACK ANGEL 1299  
BLAIRS NEW GENERATION 303Z  
COTTONWOOD TIPTOP 63D  
COTTONWOOD TIP TOP 12Y  
S A V HARVESTOR 0338  
S A V EMBLYNETTE 5483  
S A V NET WORTH 4200  
CLEARWATER BLACK ANGEL 395  
DUFF NEW GENERATION 6107  
MV F TIBBIE 60M  
WILLOWVIEW NET WORTH 12W  
WILLOWVIEW TIPTOP 21N

EPDS	BW	WW	YW	MILK	CE	MCE
	4.4	61	106	27	-1	2
BW:	SOTW:	EOTW:	ADG:	WPDA:	PROJ WT:	AOD:
88 lbs.	984 lbs.	1152 lbs.	2.00 lbs.	3.21 lbs.	1302 lbs.	6

Here is a bull that is sired by an International son out of the prolific Black Angel cow, who has progeny scattered all over North America. You add Net Worth and New Generation, and the maternal potential is extremely productive to provide excellent bulls and females with longevity.



**Prairie  
Co-operative Limited**  
P.O. Box 1330, 751 - 7th Ave West  
Melville SK S0A 2P0



**CORY HART**  
Ag Equipment Operations  
Cupar Home & Ag Centre

P.O. Box 10, Highway 22 & Lansdown Street  
Cupar SK S0G 0Y0

www.prairieco-op.crs

Business 306.723.1206  
Cell 306.726.7755  
Fax 306.723.1202

cupar.equip@prairiecoop.com



**CASE II**  
AGRICULTURE

**RAYMORE (306) 746-2288**

**WWW.YOUNGS.CA**





7

COTTONWOOD **JD** 44K

Male 2302255

RTBG 44K 23/03/2022

S A V INTERNATIONAL 2020  
**JCC J.D. 9C**  
 WERNER BLACK ANGEL 1299

BLAIRS NEW GENERATION 303Z  
**COTTONWOOD ERICA 44B**  
 SOO LINE ERICA 0190

S A V HARVESTOR 0338  
 S A V EMBLYNETTE 5483  
 S A V NET WORTH 4200  
 CLEARWATER BLACK ANGEL 395  
 DUFF NEW GENERATION 6107  
 MVF TIBBIE 60M  
 SOO LINE LEGACY 7019  
 SOO LINE ERICA 8334

EPDS	BW	WW	YW	MILK	CE	MCE
	3.1	49	89	26	3.0	5.0

BW:	SOTW:	EOTW:	ADG:	WPDA:	PROJ WT:	AOD:
83 lbs.	780 lbs.	1082 lbs.	3.60 lbs.	3.36 lbs.	1232 lbs.	8

Here is an easy fleshing bull that put pounds on the calves — he is only an end of March calf.



# ARM RIVER METALS

**VF** VersaFrame Inc.



## METAL ROOFING & SIDING

CUSTOM TRIM & FULL LINE OF ACCESSORIES

1-306-731-2066 [www.versaframe.ca](http://www.versaframe.ca)



**LOTS  
8-17**

# NU-HORIZON ANGUS

Kieran, Deb & Kodie Doetzel  
Box 227 Lipton, SK S0G 3B0  
kdknuhorizon@gmail.com

Ph: 306-336-2245  
Cell: 403-357-7648  
Kodie's Cell: 306-331-0384



Firstly, we would like to thank our bidders and buyers from past years sales having trust in our program. We strive for sound, good footed bulls to last our customers for many years. We also pay very close attention to both the dam and the sire in our program. They must have strong maternal traits and a balanced set of EPD's. Feel free to give Kieran or Kodie a call to discuss the 2023 offering. All bulls are sired verified.



**8**

## NU-HORIZON **LOOKOUT** 202K

Male 2275285 TK 202K 15/01/2022

O C C LEGEND 616L  
**B C LOOKOUT 7024**  
GIBBET HILL MIGNONNE E37

S A V RAINFALL 6846  
**JL FOREVER LADY 0010**  
JL FOREVER LADY 8044

O C C EMBLAZON 854E  
O C C BLACKBIRD 632J  
PAPA EQUATOR 2928  
GIBBET HILL MIGNONNE TR 29  
COLEMAN CHARLO 0256  
S A V BLACKCAP MAY 4136  
MCCONNELL ALTITUDE 3114  
JL FOREVER LADY 3009

EPDS	BW	WW	YW	MILK	CE	MCE
	2.4	63	106	24	4	2
BW:	SOTW:	EOTW:	ADG:	WPDA:	PROJ WT:	AOD:
79 lbs.	986 lbs.	1256 lbs.	3.21 lbs.	3.23 lbs.	1406 lbs.	2

- Big time herd sire prospect that has been on the radar since the day he was born.
- His first time dam that Shane Michelson found for us as a heifer calf definitely out did herself in raising 202K, plus she's an ideal uddered female that is phenotypically pleasing as she is easy to find on pasture.
- Lookout definitely does not need an introduction. He is well known for raising high quality cattle that are built to last.
- 202K is a good structured, loose made bull that has the extra length to raise the heavy calves come fall time.
- **Sire verified**
- Retaining in herd use semen interest



**B C LOOKOUT 7024 SIRE**





9

## NU-HORIZON TRIUMPH 208K

Male 2279629 TK 208K 23/01/2022

COLEMAN BRAVO 6313  
**COLEMAN TRIUMPH 9145**  
LAWSON'S CHLOE C815

FREYBURN WINDY 129C  
**NU-HORIZON PRIDE 078H**  
NU-HORIZON PRIDE 7089E

COLEMAN CHARLO 0256  
COLEMAN DONNA 714  
SA V RENOWN 3439  
LAWSON'S CHLOE Z341  
EASTONDALE REALLY WINDY 02'13  
GERLEI LADY 90U  
SA V MANDAN 0623  
MERIT PRIDE 2071

EPDS	BW	WW	YW	MILK	CE	MCE
	2.3	59	102	23	0	-2
BW:	SOTW:	EOTW:	ADG:	WPDA:	PROJW:	AOD:
85 lbs.	904 lbs.	1194 lbs.	3.45 lbs.	3.13 lbs.	1344 lbs.	2

- This Triumph son stood out all summer on pasture and still stands out to this day at Hagerty's!
- His young dam hit it out of the park in raising 208K and we are excited for her future.
- We used Triumph with great success and this bold bodied, large scrotaled son is a prime example why.
- We feel 208K brings a lot of value to the table and plan on utilizing him in our own program.
- **Sire verified**
- Retaining in herd use semen interest



COLEMAN TRIUMPH 9145 SIRE

10

## NU-HORIZON BOND 210K

Male 2279630 TK 210K 01/02/2022

MUSGRAVE 316 COLOSSAL 137  
**GRASS ROOTS BOND 007**  
DUCHESS OF PEAK DOT 756T

HLC KOZI 963E  
**NU-HORIZON MCHENRY 050H**  
NU-HORIZON MCHENRY 650D

LD CAPITALIST 316  
MUSGRAVE LADY BARBARA 545  
PEAK DOT HOBSON 57N  
DUCHESS OF PEAK DOT 502M  
KOUPL KOZI 418  
JUSTAMERE DCH 101 PRIDE 825C  
JL JOCK 9002  
HILOW LADY MCHENRY 45W

EPDS	BW	WW	YW	MILK	CE	MCE
	2.2	64	104	25	7	9
BW:	SOTW:	EOTW:	ADG:	WPDA:	PROJW:	AOD:
83 lbs.	944 lbs.	1230 lbs.	3.40 lbs.	3.31 lbs.	1380 lbs.	2

- The true definition of a real world beef bull.
- Bold bodied, big pinned Bond son that is big backed and carries his shape right down to his stifle.



- This sure footed sire prospect should be easy to find in the pen.
- Heifer bull that definitely does not sacrifice performance.
- **Sire verified**





# 11

## NU-HORIZON BOND 223K

**Male** 2275286 **TK 223K** 15/02/2022

MUSGRAVE 316 COLOSSAL 137  
**GRASS ROOTS BOND 007**  
 DUCHESS OF PEAK DOT 756T

B C LOOKOUT 7024  
**NU-HORIZON JILT 009H**  
 NU-HORIZON JILT 8008F

LD CAPITALIST 316  
 MUSGRAVE LADY BARBARA 545  
 PEAK DOT HOBSON 57N  
 DUCHESS OF PEAK DOT 502M  
 O C C LEGEND 616L  
 GIBBET HILL MIGNONNE E37  
 PVF INSIGHT 0129  
 NU-HORIZON JILT 609D

EPDS	BW	WW	YW	MILK	CE	MCE
	2.7	58	96	23	6	7
BW:	SOTW:	EOTW:	ADG:	WPDA:	PROJ WT:	AOD:
83 lbs.	854 lbs.	1100 lbs.	2.93 lbs.	3.07 lbs.	1250 lbs.	2

- Honestly we only have one disappointment with Bond and that is that we wished we had more!
- Run the pair of Bonds together if you want a uniform calf crop that will be expressive shaped cattle that will catch the buyers eyes come fall time.

- 223K should have plenty of longevity, he's square footed and loose made.
- He's a level made, well balanced bull that should make a super set of females.
- **Sire verified**



GRASS ROOTS BOND 007 SIRE

# 13

## NU-HORIZON GRIT 243K

**Male** 2295640 **TK 243K** 25/02/2022

BUBS SOUTHERN CHARM AA31  
**BUSHES GRIT 501**  
 BUSHES BLACKBIRD 4609

BROOKING BANK NOTE 4040  
**NU-HORIZON ERICA 7039E**  
 MICH ERICA 1379

SILVEIRAS CONVERSION 8064  
 HICKORY HILL ERICA 009  
 BASIN EXCITEMENT  
 BUSHES BLACKBIRD 1760  
 CONNEALY EARNAN 076E  
 E A ROSE 918  
 PVF INSIGHT 0129  
 HILLARD ERICA 002

EPDS	BW	WW	YW	MILK	CE	MCE
	4.7	64	108	19	-1	6
BW:	SOTW:	EOTW:	ADG:	WPDA:	PROJ WT:	AOD:
94 lbs.	874 lbs.	1132 lbs.	3.07 lbs.	3.25 lbs.	1282 lbs.	5

- Talk about a royally bred herd sire prospect. Combines the greats of Bank Note and Insight, with our up and coming Southern Charm son that Montgomery Ranch from North Dakota and ourselves partnered up on.
- There are some awesome cow family's behind 243K. The Blackbirds from Buses, our Erica donor from Michelson Land & Cattle, and the famous EA Rose 918.

- 243K combines all the power you want with an awesome phenotype.
- He's a sure footed, stout boned herdsire that is big hipped and has an awesome balanced look.
- 3/4 brother to lot 14
- **Sire verified**

# 14

## NU-HORIZON GRIT 250K

**Male** 2295178 **TK 250K** 09/03/2022

BUBS SOUTHERN CHARM AA31  
**BUSHES GRIT 501**  
 BUSHES BLACKBIRD 4609

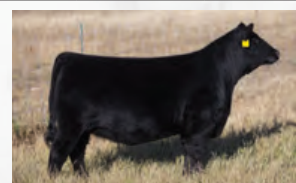
BROOKING BANK NOTE 4040  
**BROOKING RITA ROULETTE 7097**  
 VOS VEGAS RITA ROULETTE 1B

SILVEIRAS CONVERSION 8064  
 HICKORY HILL ERICA 009  
 BASIN EXCITEMENT  
 BUSHES BLACKBIRD 1760  
 CONNEALY EARNAN 076E  
 E A ROSE 918  
 DAMERON FIRST CLASS  
 TRIARA RITA 228Z

EPDS	BW	WW	YW	MILK	CE	MCE
	2.9	65	105	19	3	7
BW:	SOTW:	EOTW:	ADG:	WPDA:	PROJ WT:	AOD:
89 lbs.	874 lbs.	1108 lbs.	3.43 lbs.	3.30 lbs.	1258 lbs.	5

- Another awesome Grit son that took off since he got on test.
- He's off a very productive Bank Note/First Class cow from Brooking.
- Calves should have plenty of growth but come moderate in size.

- Good footed bull that combines plenty of muscle and shape with a level, eye catching look.
- 3/4 brother to lot 13
- **Sire verified**



BROOKING RITA ROULETTE 7097 DAM



# 15 NU-HORIZON PRAIRIE GOLD 258K

Male 2285962 TK 258K 13/03/2022

FF BLACK GOLD JF C19  
J SQUARE S PRAIRIE GOLD 989G  
J SQUARE S GEORGINA 82C

JL JOCK 9002  
NU-HORIZON MCHENRY 650D  
HILOW LADY MCHENRY 45W

CONNEALY BLACK GRANITE  
JF BARBARAMERE Y3  
SANKEYS JUSTIFIED 101  
J SQUARE S GEORGINA 90Z  
S A V YOUNG JOCK 6457  
S A V MADAME PRIDE 7798  
HOWE MAGIC 28R  
LODGE LADY MCHENRY 57R

EPDS	BW	WW	YW	MILK	CE	MCE
	0.7	47	84	23	5.0	8.0
BW:	SOTW:	EOTW:	ADG:	WPDA:	PROJ WT:	AOD:
83 lbs.	840 lbs.	1118 lbs.	3.31 lbs.	3.37 lbs.	1268 lbs.	6



- Small headed calving ease sire that is off a very productive Jock cow of ours.
- Real chunk of a beef bull that is bold bodied and STOUT!
- We have great luck with Prairie Gold and 258K fits the mold.

- Should produce a pen full of awesome replacements that will be sound footed and very productive.
- Sire verified

# 16 NU-HORIZON GRIT 260K

Male 2295180 TK 260K 16/03/2022

BUBS SOUTHERN CHARM AA31  
BUSHES GRIT 501  
BUSHES BLACKBIRD 4609

MVF PIONEER 104X  
NU-HORIZON DUCHESS 3115A  
LODGE DUCHESS 25U

SILVEIRAS CONVERSION 8064  
HICKORY HILL ERICA 009  
BASIN EXCITEMENT  
BUSHES BLACKBIRD 1760  
S A V PIONEER 7301  
MVF ANNIE K 317U  
G A R RETAIL PRODUCT  
LODGE DUCHESS 1J

EPDS	BW	WW	YW	MILK	CE	MCE
	2	62	99	23	5	8
BW:	SOTW:	EOTW:	ADG:	WPDA:	PROJ WT:	AOD:
82 lbs.	856 lbs.	1136 lbs.	3.33 lbs.	3.45 lbs.	1286 lbs.	9



BUSHES GRIT 501 SIRE

- Even though we were a year late using Grit his first calf crop at our place is sure exciting and we are proud to present them to the public.

- 260K is off one of our best cows on the farm. She's a sharp fronted, angular female who is big bodied and has an awesome udder.
- This Grit son is a big topped, thick ended calf that should be able to produce heavy muscled feeder cattle and excellent replacements.
- Sire verified

# 17 NU-HORIZON PRAIRIE GOLD 266K

Male 2287436 TK 266K 17/03/2022

FF BLACK GOLD JF C19  
J SQUARE S PRAIRIE GOLD 989G  
J SQUARE S GEORGINA 82C

S A V REPLICA 9484  
NU-HORIZON REPLICA 607D  
NU-HORIZON TIBBIE 459B

CONNEALY BLACK GRANITE  
JF BARBARAMERE Y3  
SANKEYS JUSTIFIED 101  
J SQUARE S GEORGINA 90Z  
SITZ TRAVELER 8180  
SUNSET VALLEY FRVR LADY 6313  
BROOKING RANSOM 228  
MVF TIBBIE 458U

EPDS	BW	WW	YW	MILK	CE	MCE
	0.2	42	81	23	7	10
BW:	SOTW:	EOTW:	ADG:	WPDA:	PROJ WT:	AOD:
81 lbs.	790 lbs.	1040 lbs.	2.98 lbs.	3.17 lbs.	1190 lbs.	6



- Even though 266K is the youngest he definitely still fits the mold of some of the older ones.
- Smooth shouldered, small headed, and built for the heifer pen!
- This moderate framed bull is real good footed and should last for many years.

- The first Prairie Gold daughters are in production now and we could not be happier.
- Sire verified



LOTS  
18-23

## GUTZKE RANCH

Brodie Gutzke  
Box 114 Weyburn, SK  
S4H 2J8

Ph: 306-861-6575  
brodiegutzke@hotmail.com



Welcome. Gutzke Ranch is a growing Purebred Angus operation that is working to raise functional quality cattle that work in the real world. Both calving ease and power bulls have been selected for our line up this year. We are extremely proud of our first offering at the Triple A sale and if you have any questions regarding the bulls feel free to give me a call.

Brodie Gutzke



18

18

GUTZKE **RETRO** 33K

Male 2283694

GTKE 33K 27/03/2022

S A V RENOVATION 6822  
**BROOKING RETRO 9071**  
BROOKING ROSE 6067

SCHIEFELBEIN ATTRACTIVE 4565  
**NORTHERN VIEW LUCY 101G**  
NORTHERN VIEW LUCY 71C

S A V RENOWN 3439  
S A V MADAME PRIDE 0151  
CONNEALY EARNAN 076E  
SOO LINE ROSE 1019  
JMB TRACTION 292  
FROSTY ANSWER 3979  
VISION UNANIMOUS 1418  
NORTHERN VIEW LUCY 86U

EPDS	BW	WW	YW	MILK	CE	MCE
	-0.4	68	125	25	9	9

BW:	SOTW:	EOTW:	ADG:	WPDA:	PROJ WT:	AOD:
73 lbs.	964 lbs.	1264 lbs.	3.57 lbs.	3.97 lbs.	1414 lbs.	3

Recommended for heifers or cows. This bull started at 73lbs and since then exploded with growth. We retained a full sibling as a bred heifer and certainly is a female that reflects the high maternal value in this pedigree.

205 - 833lbs 365 - 1491 lbs



**BROOKING RETRO 9071** SIRE

ACQUIRE  
THE ANGUS  
ADVANTAGE





19

GUTZKE **BLOODLINE** 9K

Male 2283681 GTKE 9K 07/03/2022

S A V RAINFALL 6846  
**S A V BLOODLINE 9578**  
 S A V EMBLYNETTE 2369  
  
 S A V CUTTING EDGE 4857  
**WIWA CREEK EULIMA 1806**  
 LLB EULIMA 830X

COLEMAN CHARLO 0256  
 S A V BLACKCAP MAY 4136  
 S A V 707 RITO 9969  
 S A V EMBLYNETTE 7566  
 S A V HARVESTOR 0338  
 S A V BLACKCAP MAY 5530  
 REMINGTON TRAVELER 451T  
 LLB EULIMA 412T

EPDS	BW	WW	YW	MILK	CE	MCE
	5.3	62	119	18	-4	7

BW:	SOTW:	EOTW:	ADG:	WPDA:	PROJ WT:	AOD:
90 lbs.	910 lbs.	1172 lbs.	3.12 lbs.	3.47 lbs.	1322 lbs.	4

Recommended for cows. 9K has the look and character that is easily noticed. We think highly of Dam Wiwa Creek Eulima 1806 and believe this lineage will make those high valued daughters in the replacement pen.

205 - 732lbs 365 - 1287lbs



S A V BLOODLINE 9578 SIRE

20

GUTZKE **BLOODLINE** 7K

Male 2285825 GTKE 7K 07/03/2022

S A V RAINFALL 6846  
**S A V BLOODLINE 9578**  
 S A V EMBLYNETTE 2369  
  
 SITZ RIGHT ANSWER 506Y  
**BROOKING BLACKCAP 6125**  
 REMINGTON BLACKCAP 502T

COLEMAN CHARLO 0256  
 S A V BLACKCAP MAY 4136  
 S A V 707 RITO 9969  
 S A V EMBLYNETTE 7566  
 CONNEALY RIGHT ANSWER 746  
 SITZ BARBARAMERE NELL 525  
 O C C LEGACY 839L  
 THOMAS BLACKCAP 9133

EPDS	BW	WW	YW	MILK	CE	MCE
	0.1	50	96	22	8	12

BW:	SOTW:	EOTW:	ADG:	WPDA:	PROJ WT:	AOD:
71 lbs.	910 lbs.	1118 lbs.	2.48 lbs.	3.21 lbs.	1268 lbs.	6

Recommended for cows. Another SAV Bloodline, we used bloodline to add growth and improve feet.

205 - 747lbs 365 - 1184lbs



20





21

21

GUTZKE **THREE RIVERS** 4K

Male 2283673 GTKE 4K 26/02/2022

ELLINGSON HOMESTEAD 6030  
**ELLINGSON THREE RIVERS 8062**  
EA EMBLYNETTE 6279

THUNDER CREEK DENSITY 40Y  
**WIWA CREEK ERICA 116'16**  
WIWA CREEK ERICA 96'14

CTS REMEDY 1T01  
EA ERICA 1082  
ELLINGSON CHAPS 4095  
EA EMBLYNETTE 2159  
S A V 004 DENSITY 4336  
THUNDER CREEK RUBY 73P  
WIWA CREEK NET WORTH 38'12  
WIWA CREEK ERICA 65'10

EPDS	BW	WW	YW	MILK	CE	MCE
	4.7	71	130	20	-2	4

BW:	SOTW:	EOTW:	ADG:	WPDA:	PROJ WT:	AOD:
91 lbs.	1044 lbs.	1330 lbs.	3.40 lbs.	3.83 lbs.	1480 lbs.	6

Recommended for cows. Three Rivers 4K is a bull genetically designed to add pounds and dollars come payday.

205 - 771lbs 365 - 1419lbs



ELLINGSON THREE RIVERS 8062 SIRE

22

GUTZKE **RETRO** 3K

Male 2283672 GTKE 3K 26/02/2022

S A V RENOVATION 6822  
**BROOKING RETRO 9071**  
BROOKING ROSE 6067

BROOKING BLACK INK 4019  
**BROOKING LADY 6137**  
WERNER LADY 0349

S A V RENOWN 3439  
S A V MADAME PRIDE 0151  
CONNEALY EARNAN 076E  
SOO LINE ROSE 1019  
S A V RESOURCE 1441  
FLAG MISSY GAL 90568  
LEACHMAN RIGHT TIME  
SANDPOINT LADY 7869

EPDS	BW	WW	YW	MILK	CE	MCE
	-0.3	52	98	28	8	8

BW:	SOTW:	EOTW:	ADG:	WPDA:	PROJ WT:	AOD:
77 lbs.	960 lbs.	1202 lbs.	2.88 lbs.	3.46 lbs.	1352 lbs.	6

Recommended for heifers or cows. Retro 3K is a calving ease candidate that will add growth and style.

205 - 728lbs 365 - 1267lbs



22



23

GUTZKE **RETRO** 6K

Male 2283680

GTKE 6K 04/03/2022

S A V RENOVATION 6822  
**BROOKING RETRO 9071**  
 BROOKING ROSE 6067

REMITALL F BOYCOTT 71B  
**WIWA CREEK TILDA 1703**  
 WIWA CREEK TILDA 529'15

S A V RENOWN 3439  
 S A V MADAME PRIDE 0151  
 CONNEALY EARNAN 076E  
 SOO LINE ROSE 1019  
 REMITALL F PROSPECTOR 110Z  
 BAR HEART LADY BATE 252Z  
 S A V HARVEST MOON 2244  
 WIWA CREEK TILDA 138'11

EPDS	BW	WW	YW	MILK	CE	MCE
	1.4	52	92	23	4	5

BW:	SOTW:	EOTW:	ADG:	WPDA:	PROJ WT:	AOD:
85 lbs.	948 lbs.	1204 lbs.	3.05 lbs.	3.53 lbs.	1354 lbs.	5

Recommended for cows. Athletic, long bodied and great haired. 6K will sire calves that order buyers are searching for.

205 - 707lbs 365 - 1305lbs



*Offering veterinary service  
to Melville and area  
since 1974*



**MELVILLE VETERINARY CLINIC**

202 Heritage Drive Melville, SK S0A 2P0

T: 306-728-4456 F: 306-728-4460

[www.melvillevetclinic.com](http://www.melvillevetclinic.com)

Our compassionate and knowledgeable veterinary health team is dedicated to your small and large animal health needs.

Dr. Zachary Johnson DVM, Practice Owner - Dr. Charlotte Tyson BSc, DVM

Dr. Barbara Evans BSc, DVM, CVA - Dr. Jessica Murray DVM - Dr. Brandi Bakken BSc, DVM

Breanna Issel RVT - Kimberly Berger RVT - Kiana Campbell RVT - Madison Harrold RVT - Shanae Lingelbach RVT

Kylie Johnson, Practice Owner - Nadine Bjornerud - Katha Pettinger - Monica Sawley - Krystal Baxter



**LOTS  
24-28**

## WILLOWVIEW ANGUS

**Ken & Sandy Harle**  
Box 512 Regina, SK  
S4P 3A3

**Ph: 306-539-8185**  
306-359-6100  
harleks@sasktel.net



Welcome to the 26th edition of this sale. We are proud to have been a part of this sale for 25 years. Thank-you to all bidders and buyers who have supported our sale over the years. Like most, our goal is to have a calf born easy and then perform like heck. The mother must be just that...a great mom. A nice udder, good feet and docile disposition are high on the list. We would love to help you find a bull that works for you.

See you sale day!

Ken, Sandy and family



**24**

## **24** WILLOWVIEW **COWBOY LOGIC** 1K

Male 2271807 KSH 1K 03/01/2022

HA COWBOY UP 5405C  
**FREYS COWBOY LOGIC**  
F A R PRINCESS 148Z

WERNER FLAT TOP 4136  
**WILLOWVIEW GRAND JUNE 3H**  
WILLOWVIEW GRAND JUNE 35D

HA OUTSIDE 3008  
HA BLACKCAP LADY 1602  
WK BOBCAT DMF  
F A R PRINCESS 214X  
CONNEALY BLACK GRANITE  
WERNER LADY 0304  
WILLOWVIEW BIG SPLIT 19A  
WILLOWVIEW GRAND JUNE 1Y

We chose Cowboy Logic for his calving ease. With a gestation shortened 3-7 days his calves have been born light and easy with amazing vigor. This Werner Flat Top daughter did a heck of a job on her first calf. He ranks in the top 1 and 2 percentile for birth weight and calving ease along with top 10 and 15 percentile for weaning and yearling weights.

EPDS	BW	WW	YW	MILK	CE	MCE
	-2	61	113	28	15	13
BW:	SOTW:	EOTW:	ADG:	WPDA:	PROJ WT:	AOD:
69 lbs.	1020 lbs.	1326 lbs.	3.64 lbs.	3.31 lbs.	1476 lbs.	2





**25**

WILLOWVIEW **ARMSTRONG** 9K

Male 2271834 KSH 9K 23/01/2022

KR APOLLO 6458  
**MERIT ARMSTRONG 9035G**  
MERIT LADY ANN 7076E

WILLOWVIEW BIG SPLIT 19A  
**WILLOWVIEW PRIDE 4C**  
WILLOWVIEW PRIDE 7A

KRAMERS APOLLO 317  
KR MISS ANGUS 4309  
HF UNIT 14C  
MERIT LADY ANN 7158  
RING CREEK BIG SPLIT 11Y  
BLACK RIDGE GAMMER 23Y  
S A V POTENTIAL 0205  
WILLOWVIEW PRIDE 3N

EPDS	BW	WW	YW	MILK	CE	MCE
	1.6	48	93	29	5.5	6

BW:	SOTW:	EOTW:	ADG:	WPDA:	PROJ WT:	AOD:
71 lbs.	964 lbs.	1272 lbs.	3.67 lbs.	3.34 lbs.	1422 lbs.	7

Merit Armstrong continues to sire moderate birth weight calves. This mom did great work raising twins that came off pasture at over 750 lbs.

### CLAYTON CURTIS

Assistant General Manager  
ccurtis@masterfeeds.com  
DIRECT 306-790-5557 | CELL 306-539-9486

745 Park Street, Regina, Saskatchewan S4N 4Y4  
PHONE 306-721-2727 | FAX 306-721-3141

A division of  **Masterfeeds**  
an **Alltech** company

## Riverview Sausage

2.5km NW of Craven, on Highway 20

- Bison
- Wild Game Processing
- Butchering
- Smokies
- Garlic Sausage
- Smoked Garlic
- Jalapeno & Cheddar Smokies
- Maple Sausage
- Pepperettes
- Homemade Burgers

Curtis Hicks

1 306 305 9144

Riverviewsausage@gmail.com

Riverviewsausage.com



## SONS OF LODGE FORTITUDE 13C

This will be the last of our Fortitude sired calves. He has produced many sons that have sold through this sale. We are confident these guys will go to work just as their brothers have. If daily gain performance is your preference, we invite you to check out Lots 27 and 28. These two bulls were number 1 and 2 for highest daily gain this year.



### 26

WILLOWVIEW **FORTITUDE** 10K

Male 2271838 KSH 10K 24/01/2022

PA FORTITUDE 2500  
**LODGE FORTITUDE 13C**  
LODGE QUALITY LASS 31Y

WILLOWVIEW BIG SPLIT 19A  
**WILLOWVIEW BELLE 16D**  
WILLOWVIEW BELLE 18Y

GAR-EGL PROTEGE  
G G CLARA 0171  
MOHNEN DYNAMITE 1356  
LODGE QUALITY LASS 32T  
RING CREEK BIG SPLIT 11Y  
BLACK RIDGE GAMMER 23Y  
PEAK DOT PRIME CUT 218S  
WILLOWVIEW BELLE 38R

EPDS	BW	WW	YW	MILK	CE	MCE
	2.2	49	90	19	2	8

BW:	SOTW:	EOTW:	ADG:	WPDA:	PROJ WT:	AOD:
85 lbs.	834 lbs.	1096 lbs.	3.12 lbs.	2.88 lbs.	1246 lbs.	6



### 27

WILLOWVIEW **FORTITUDE** 17K

Male 2278431 KSH 17K 28/01/2022

PA FORTITUDE 2500  
**LODGE FORTITUDE 13C**  
LODGE QUALITY LASS 31Y

S A V WEST RIVER 2066  
**WILLOWVIEW GRAND JUNE 5F**  
WILLOWVIEW GRAND JUNE 35D

GAR-EGL PROTEGE  
G G CLARA 0171  
MOHNEN DYNAMITE 1356  
LODGE QUALITY LASS 32T  
S A V BISMARCK 5682  
S A V EMBLYNETTE 0491  
WILLOWVIEW BIG SPLIT 19A  
WILLOWVIEW GRAND JUNE 1Y

EPDS	BW	WW	YW	MILK	CE	MCE
	1.3	52	95	22	2.5	4.5

BW:	SOTW:	EOTW:	ADG:	WPDA:	PROJ WT:	AOD:
76 lbs.	978 lbs.	1368 lbs.	4.64 lbs.	3.64 lbs.	1518 lbs.	4



### 28

WILLOWVIEW **FORTITUDE** 26K

Male 2293173 KSH 26K 08/02/2022

PA FORTITUDE 2500  
**LODGE FORTITUDE 13C**  
LODGE QUALITY LASS 31Y

WILLOWVIEW BIG SPLIT 19A  
**WILLOWVIEW TIBBIE 11D**  
MV F TIBBIE 106X

GAR-EGL PROTEGE  
G G CLARA 0171  
MOHNEN DYNAMITE 1356  
LODGE QUALITY LASS 32T  
RING CREEK BIG SPLIT 11Y  
BLACK RIDGE GAMMER 23Y  
S A V PIONEER 7301  
MV F TIBBIE 030L

EPDS	BW	WW	YW	MILK	CE	MCE
	2.6	49	91	21	2	6

BW:	SOTW:	EOTW:	ADG:	WPDA:	PROJ WT:	AOD:
90 lbs.	908 lbs.	1292 lbs.	4.57 lbs.	3.54 lbs.	1442 lbs.	6



**LOTS  
29-32**

# TRIPLE H ANGUS

**Perry & Dawn Hart**  
Box 531 Cupar, SK S0G 0Y0

**Cory Hart**  
Box 334 Cupar, SK S0G 0Y0

Ph: 306-723-4832 triplehredangus@gmail.com



Welcome to the TRIPLE "A" BULL SALE, I would like to Thank all the Bidders and Buyers of the Past Sales for your support and look forward to seeing you at the 2023 Sale. For more info on the Bulls call Perry 306-723-4832, Dawn 306-718-7979 or Cory 306-726-7755

**29**

TRIPLE H **COLOSSAL** 113K

Male 2268595 HRA 113K 27/03/2022

MUSGRAVE 316 COLOSSAL 137  
**EDWARDS COLOSSAL 153H**  
MAR FINAL KAHUNA 856

HOOVER DAM  
**F V HD QUEEN 302Z**  
F V QUEEN NW 19X

LD CAPITALIST 316  
MUSGRAVE LADY BARBARA 545  
S A V FINAL ANSWER 0035  
MAR KAHUNA PRECISION 328 674  
SYDGEN C C & 7  
ERICA OF ELLSTON C124  
S A V NET WORTH 4200  
F V 12U QUEEN 320S

EPDS	BW	WW	YW	MILK	CE	MCE
	1.7	49	86	23	8	11

BW:	SOTW:	EOTW:	ADG:	WPDA:	PROJ WT:	AOD:
85 lbs.	814 lbs.	1052 lbs.	2.83 lbs.	3.31 lbs.	1202 lbs.	10



Here's a Musgrave 316 Colossal 137 grandson with a very interesting Pedigree, Breed Legends such as Final Answer, Sydgen C C & 7, Hoover Dam and Net Worth all show up. This is only the 2nd Bull that his 10 year old **CAA PREMIER DAM 302Z** has raised, the 1st was Triple H Intuition 14B our past Herd Sire. He was the Sire of Minburn Intuition 23D (Minburn's high seller in 2017 to Jon Locke) and Triple H Intuition 61G ( high seller in 2020 Triple A to Danny Thomas). We have retained 4 daughters of 302Z's and 2 grand daughters in our Herd. Colossal 113K was born March 27th, has a 85 lb birth weight and **205 WT OF 717 LBS**. When describing this bull he checks off a lot of boxes, deep bodied, good footed, smooth head, good hair, wide topped and big nuted. He could be used on heifers or cows and you will definitely want to keep all his daughters. Don't miss out on this guy because of this age, he's one of the youngest bulls in the Sale but if he turns out half as good as his brother Triple H Intuition 14B you will be very satisfied. Here's a calving ease bull with some performance.

**CE 8 BW 1.7**

## PRAIRIE AG PETROLEUM LTD.

210 McDonald St. N.  
Regina, Sask. S4N 5W3  
Tel: (306) 721-6880  
Fax: (306) 721-3748



Bulk Fuel, Cardlock, Lubes, Baler Twine

## CUSTOM CORRAL CLEANING AOK CONTRACTING LTD.

Locally owned and Reasonable Rates. Great Service. Call now to book, operated business.

Call Ken at (306) 897-3309

**AOK CONTRACTING LTD.**

Box 47 TROSSACHS, SK S0C2N0  
email: AOKCONTRACTING@LIVE.COM





31

31

## TRIPLE H 316 COLOSSAL 15K

Male 2268589 HRA 15K 05/02/2022

LD CAPITALIST 316  
MUSGRAVE 316 COLOSSAL 137  
MUSGRAVE LADY BARBARA 545

TRIPLE H FORTITUDE UP 11E  
TRIPLE H FT LINDA 54H  
IVANHOE LINDA 20A

CONNEALY CAPITALIST 028  
LD DIXIE ERICA 2053  
MUSGRAVE BIG SKY  
MUSGRAVE LADY BARBARA 272  
PA FORTITUDE 2500  
TRIPLE H LINDA 25C  
YOUNG DALE EDGAR 43X  
IVANHOE LINDA 31X

EPDS	BW	WW	YW	MILK	CE	MCE
	0.7	55	94	22	7	11
BW:	SOTW:	EOTW:	ADG:	WPDA:	PROJ WT:	AOD:
78 lbs.	884 lbs.	1186 lbs.	3.60 lbs.	3.22 lbs.	1336 lbs.	2

Here's a direct son of Musgrave 316 Colossal 137, we have always admired the consistency of his progeny and 15K has been an eye catcher from an early age, a pasture favorite. His Dam HRA 54H that traces back to PA Fortitude 2500, has done an outstanding job on her 1st try. He's long bodied with a nice small Angus head, wide topped, super smooth made, clean fronted and is a stylish chunk of a bull. With a 78 lb BWT this guy will definitely would work in the heifer pen or on cows. Here's another calving ease bull with some performance. He is our 2nd highest indexing bull going from a **205 WT OF 728 LBS** to **YWT OF 1281 LBS**

CE 7 BW 0.8

32

## TRIPLE H INTUITION 8K

Male 2268588 HRA 8K 26/01/2022

S A V BRILLIANCE 8077  
TRIPLE H INTUITION 14B  
F V HD QUEEN 302Z

PAINTROCK TRAPPER  
TRIPLE H PR TRADITION 1H  
TRIPLE H JS TRADITION 6F

S A V BISMARCK 5682  
S A V BLACKCAP MAY 5270  
HOOVER DAM  
F V QUEEN NW 19X  
PAINTROCK MOUNTAIN MAN  
EMULOUS OF PAINTROCK 93-9  
PEAK DOT EASY JUMP START 142C  
JOHNSTON 7301 TRADITION 820Z

EPDS	BW	WW	YW	MILK	CE	MCE
	2.6	53	97	21	3	6
BW:	SOTW:	EOTW:	ADG:	WPDA:	PROJ WT:	AOD:
89 lbs.	875 lbs.	1172 lbs.	3.54 lbs.	3.10 lbs.	1322 lbs.	2



32

Interesting combination here, Triple H Intuition 14B and Paintrock Trapper. If you check out his Pedigree you will find Bismarck, Brilliance, Hoover Dam and Peak Dot Easy Jumpstart. We have sold a lot of Triple H Intuition 14B sons and this long bodied, smooth-made, clean fronted fella with a nice small Angus head could work on larger framed heifers or cows. His Dam HRA 1H has done an excellent job on her 1st try and goes back to Tradition 820z a **CAA PREMIER DAM**. He is our top indexing Bull going from a **205 WT OF 648 LBS** to a **YWT OF 1283 LBS**.

CE 3 BW 2.6



**LOTS**  
**33-38**

## 4K ANGUS

Tim, Paulette, Ellen and Scott Keys  
Box 277 Earl Grey, SK S0G 1J0  
4kangus@gmail.com

Ph: 306-939-4499  
Tim's cell: 306-731-7995  
Paulette's cell: 306-731-7899



Welcome to the Triple A Angus Bull Sale on behalf of 4K Angus. We are excited to have joined this group of Angus breeders this year, and have consigned a very well rounded group of bulls that we are quite proud of. Our heifer and cow bulls on offer exhibit both calving ease and performance, and are backed by quality sires and proven dams. All of these bulls are guaranteed to produce calves that come unassisted and grow well. Feel free to contact us with any questions and thank you for your consideration!

**33**

KEYS **CAPITALIST** 8K

Male 2258175 KEYS 8K 29/01/2022

S A V FINAL ANSWER 0035  
**CONNEALY CAPITALIST 028**  
PRIDES PITA OF CONANGA 8821

BELL PIONEER 25A  
**KEYS EUGENIE ERICA 53D**  
BELL EUGENIE ERICA 53Y

SITZ TRAVELER 8180  
S A V EMULOUS 8145  
C R A BEXTOR 872 5205 608  
PRIDES TRAV OF CONANGA 6499  
WILLOWVIEW PIONEER 6X  
BELL BLACKCAP 55T  
BELL RIBSTONE 53U  
BELL EUGENIE ERICA 30W

EPDS	BW	WW	YW	MILK	CE	MCE
	0.9	45	80	20	5	4

BW:	SOTW:	EOTW:	ADG:	WPDA:	PROJ WT:	AOD:
84 lbs.	962 lbs.	1234 lbs.	3.24 lbs.	3.29 lbs.	1384 lbs.	6

Heifer bull—parent verified

Hard to pass up on this deep bodied, thick middled Capitalist son. This bull is off our CAA designated "Elite" Pioneer dam. His great pedigree reflects in his performance and phenotype, which is sure to carry into his progeny.



**33**

**34**

KEYS **SUDDEN LOOK** 34K

Male 2258199 KEYS 34K 07/03/2022

74-51 SUDDEN LOOK 1023  
**NRA SUDDEN LOOK 77F**  
GF RITA 66Z

JINDRA ACCLAIM  
**KEYS GENIE 230G**  
KEYS EUGENIE ERICA 30B

B C LOOKOUT 7024  
EXG LUCY P061 R3  
CONNEALY FINAL PRODUCT  
WHITESTONE RITA 666T  
JINDRA 3RD DIMENSION  
JINDRA BLACKBIRD LASSY 1111  
HILOW NEW ELIXIR 6X  
BELL EUGENIE ERICA 30Z

EPDS	BW	WW	YW	MILK	CE	MCE
	2.5	50	93	25	0	3

BW:	SOTW:	EOTW:	ADG:	WPDA:	PROJ WT:	AOD:
92 lbs.	868 lbs.	1162 lbs.	3.50 lbs.	3.44 lbs.	1312 lbs.	3

Cow bull—parent verified

This March born bull carries a heavier birthweight but doesn't exhibit negative EPDs due to his easy calving pedigree. His smooth shoulder blends well into a thick body with tons of muscle expression. The combination of Sudden Look and Acclaim will transfer quality to your calf crop.



**34**





35

35

Male 2258188  
JINDRA 3RD DIMENSION  
**JINDRA ACCLAIM**  
JINDRA BLACKBIRD LASSY 1111  
4M ELEMENT 405  
**KEYS BLACKCLASS 443F**  
KEYS BLACKCLASS 43D

KEYS **ACCLAIM** 6K

KEYS 6K 28/01/2022  
JINDRA DOUBLE VISION  
JINDRAS SAPPHIRE J 417  
CONNEALY IMPRESSION  
JINDRAS ENCHANTRESS J 102  
POSS ELEMENT 215  
4M BLACKBIRD 2004  
JINDRA DOUBLE VISION  
BELL BLACKCLASS 43Z

EPDS	BW	WW	YW	MILK	CE	MCE
	2	64	123	26	3	8
BW:	SOTW:	EOTW:	ADG:	WPDA:	PROJ WT:	AOD:
86 lbs.	1030 lbs.	1330 lbs.	3.57 lbs.	3.54 lbs.	1480 lbs.	4

Heifer bull—**parent verified**

A standout Acclaim son that exhibited the highest performance for weaning and yearling weights out of our bulls in this sale. His Element dam has consistently raised top notch calves. An all around long, thick bodied bull with tons of depth that will sire progeny that are sure to get noticed.

36

KEYS **CAPITALIST** 29K

Male 2278956 KEYS 29K 03/03/2022

CONNEALY CAPITALIST 028  
**KEYS CAPITALIST 14H**  
KEYS BLACKCLASS 43B

HILOW TIGER 107B  
**KEYS BLACKCAP 16E**  
BELL BLACKCAP 26Y

S A V FINAL ANSWER 0035  
PRIDES PITA OF CONANGA 8821  
HILOW NEW ELIXIR 6X  
BELL BLACKCLASS 43Z  
HILOW TIGER 1X  
IRV LADY MCHENRY 20Y  
BELL NET RETURN 3U  
BELL BLACKCAP 31P

EPDS	BW	WW	YW	MILK	CE	MCE
	2.6	50	90	25	1	0
BW:	SOTW:	EOTW:	ADG:	WPDA:	PROJ WT:	AOD:
90 lbs.	890 lbs.	1198 lbs.	3.67 lbs.	3.50 lbs.	1348 lbs.	5

Cow/ large heifer bull—**parent verified**

We used our own Capitalist son as a clean up bull. He proved to us that Capitalist's great attributes carries well into his progeny. This March born bull has a slightly higher birth weight, but still exhibits positive calving ease and would make a great herd sire.



36



37

KEYS **SUDDEN LOOK** 24K

Male 2258139 KEYS 24K 14/02/2022

74-51 SUDDEN LOOK 1023  
**NRA SUDDEN LOOK 77F**  
 GF RITA 66Z

HILOW NEW ELIXIR 6X  
**KEYS EUGENIE ERICA 53B**  
 BELL EUGENIE ERICA 53Y

B C LOOKOUT 7024  
 EXG LUCY P061 R3  
 CONNEALY FINAL PRODUCT  
 WHITESTONE RITA 666T  
 DLD 4R NEW ELIXIR 66U  
 HILOW PRIDE 62U  
 BELL RIBSTONE 53U  
 BELL EUGENIE ERICA 30W

EPDS	BW	WW	YW	MILK	CE	MCE
	1	41	76	24	3	1
BW:	SOTW:	EOTW:	ADG:	WPDA:	PROJ WT:	AOD:
90 lbs.	864 lbs.	1232 lbs.	4.38 lbs.	3.43 lbs.	1382 lbs.	8

Cow/ large heifer bull—**parent verified**

A smooth bodied Sudden Look son with a heavier birth weight. Calving ease on both sides of his pedigree. He carries himself well on a good foot and exhibits depth and width of body. His performance shows good growth that will carry into his progeny.



38

KEYS **CAPITALIST** 5K

Male 2258239 SK 5K 27/01/2022

S A V FINAL ANSWER 0035  
**CONNEALY CAPITALIST 028**  
 PRIDES PITA OF CONANGA 8821

SAC CONVERSATION  
**KEYS LIZA 1G**  
 KEYS BLACK LUCY 320E

SITZ TRAVELER 8180  
 S A V EMULOUS 8145  
 C R A BEXTOR 872 5205 608  
 PRIDES TRAV OF CONANGA 6499  
 SILVEIRAS CONVERSION 8064  
 LAFLINS FARRAH 0250  
 MAR INNOVATION 251  
 BELL BLACK LUCY 20C

EPDS	BW	WW	YW	MILK	CE	MCE
	-0.3	47	85	22	9	7
BW:	SOTW:	EOTW:	ADG:	WPDA:	PROJ WT:	AOD:
70 lbs.	854 lbs.	1108 lbs.	3.02 lbs.	2.94 lbs.	1258 lbs.	3

Heifer bull—**parent verified**

This light birth weight Capitalist son is more moderate but doesn't lack in depth or rib shape. His smaller framed Conversation dam has great maternal attributes, udder quality and docility. His pedigree vouches for undoubtable calving ease and performance.





**LOTS  
39-45**

## BELL ANGUS

Kenneth & Sheila Bell  
Box 27 Pense, SK S0G 3W0  
ken.bell@sasktel.net

Ph: 306-345-2052  
Cell: 306-591-7792



Welcome to the 26th Annual Triple A Bull Sale.



**39**

### BELL **SUPER CHARGER** 5K

Male 2280309 NBK 5K 01/02/2022

S A V RECHARGE 3436  
**S A V SUPERCHARGER 6813**  
S A V MADAME PRIDE 0075

NORTHERN VIEW UPWARD 92Y  
**BELL BLACK LUCY 1B**  
BELL BLACK LUCY 36N

RITO 707 OF IDEAL 3407 7075  
S A V BLACKCAP MAY 4136  
S A F 598 BANDO 5175  
S A V MADAME PRIDE 8264  
SITZ UPWARD 307R  
NORTHERN VIEW EILEENMERE 89R  
BELL STOCKADE 1L  
BELL BLACK LUCY 14D

A long bodied, thick made son of S A V Super Charger. His dam is a top end Northern View Upward 92Y daughter. Maternal brother to 5K sold to Abound Livestock in the 2021 Triple A sale. 5K should work on heifers or cows.

EPDS	BW	WW	YW	MILK	CE	MCE
	0.5	53	95	24	7	5

BW:	SOTW:	EOTW:	ADG:	WPDA:	PROJ WT:	AOD:
75 lbs.	1028 lbs.	1378 lbs.	4.17 lbs.	3.70 lbs.	1528 lbs.	8





40

40

## BELL SPECIALIST 8K

Male 2280500 NBK 8K 04/02/2022

BALDRIDGE 38 SPECIAL  
**MOGCK SPECIALIST 98**  
MOGCK RUTH 1686

S A V RAINFALL 6846  
**BELL BLACK LUCY 11H**  
BELL BLACK LUCY 16W

EF COMMANDO 1366  
BALDRIDGE ISABEL Y69  
STYLES CASH R24  
MOGCK RUTH 264  
COLEMAN CHARLO 0256  
S A V BLACKCAP MAY 4136  
MOHNEN DYNAMITE 1356  
BELL BLACK LUCY 5R

EPDS	BW	WW	YW	MILK	CE	MCE
	1.4	68	124	34	3	6
BW:	SOTW:	EOTW:	ADG:	WPDA:	PROJ WT:	AOD:
84 lbs.	926 lbs.	1290 lbs.	4.33 lbs.	3.50 lbs.	1440 lbs.	2

A nice made hairy son of Mogck Specialist 98. We used this bull on heifers and cows with much success. 8K's dam is a very feminine smooth made S A V Rainfall 2 year old.

41

## BELL GOOD NEWS 29K

Male 2280486 NBK 29K 23/02/2022

BRUIN BREAKING NEWS 2201  
**BELL BREAKING NEW 9F**  
BELL BLACK LUCY 16W

NORTHERN VIEW RIP 17D  
**BELL QUEEN 41F**  
BELL C L QUEEN 2U

BRUIN UPROAR 0070  
BRUIN 5050 PRINCESS 9401  
MOHNEN DYNAMITE 1356  
BELL BLACK LUCY 5R  
WINDY WILLOWS BOOMER 98B  
SKYEBROOK PRIDE DOLLY 13B  
CONNEALY LEAD ON  
BELL QUEEN 15N

EPDS	BW	WW	YW	MILK	CE	MCE
	3.4	49	87	24	-1	6
BW:	SOTW:	EOTW:	ADG:	WPDA:	PROJ WT:	AOD:
86 lbs.	846 lbs.	1130 lbs.	3.38 lbs.	3.23 lbs.	1280 lbs.	4

This bull is a son of our home raised sire Bell Breaking New 9F. 9F sold in the 2019 Triple A to Northern View Angus. We bought a 1/2 interest back in the bull and used him jointly with Northern View for 3 years. 29K should make an ideal heifer bull.



41





42

42

BELL **GOOD NEWS** 31K

Male 2280339 NBK 31K 24/02/2022

BRUIN BREAKING NEWS 2201  
**BELL BREAKING NEW 9F**  
BELL BLACK LUCY 16W

MAR INNOVATION 251  
**BELL BLACK LADY 14F**  
BELL GRETCHEN 72Y

BRUIN UPROAR 0070  
BRUIN 5050 PRINCESS 9401  
MOHNEN DYNAMITE 1356  
BELL BLACK LUCY 5R  
CONNEALY IMPRESSION  
MAR FINAL KAHUNA 856  
BELL TITAN 29W  
SUNNY GROVE GRETCHEN 59T

EPDS	BW	WW	YW	MILK	CE	MCE
	4.1	56	98	25	-3	6

BW:	SOTW:	EOTW:	ADG:	WPDA:	PROJ WT:	AOD:
90 lbs.	894 lbs.	1232 lbs.	4.02 lbs.	3.53 lbs.	1382 lbs.	4

Another stout made son of Bell Breaking New 9F. His dam is a very functional, tight uddered daughter of MAR Innovation.



43

43

BELL **GOOD NEWS** 34K

Male 2280303 NBK 34K 28/02/2022

BRUIN BREAKING NEWS 2201  
**BELL BREAKING NEW 9F**  
BELL BLACK LUCY 16W

HILOW TITAN 13P  
**BELL QUEEN 21Y**  
BELL QUEEN 15N

BRUIN UPROAR 0070  
BRUIN 5050 PRINCESS 9401  
MOHNEN DYNAMITE 1356  
BELL BLACK LUCY 5R  
ISLA BANK TITAN 148  
HILOW HEATHER 23E  
BELL STOCKADE 1L  
BELL RT QUEEN 10J

EPDS	BW	WW	YW	MILK	CE	MCE
	3.3	40	70	22	-2	8

BW:	SOTW:	EOTW:	ADG:	WPDA:	PROJ WT:	AOD:
79 lbs.	856 lbs.	1126 lbs.	3.21 lbs.	3.26 lbs.	1276 lbs.	11

A taller framed son of Breaking New 9F. His dam is an 11 year old daughter of Hi Low Titan 13P, a bull we bought in partnership with Dan Howell our of the 2005 Triple A sale from Dan's father Robert. He did a super job for us siring many daughters we retained in the herd.



44

44

BELL 3H **GOOD NEWS** 35K

Male 2280492 NBK 35K 28/02/2022

BELL BREAKING NEW 9F  
**JASON BELL GOOD NEWS 3H**  
JASON BELL PRIDE 61E

NORTHERN VIEW EFFECTIVE 88B  
**BELL BLACK LUCY 25G**  
BELL BLACK LUCY 6D

BRUIN BREAKING NEWS 2201  
BELL BLACK LUCY 16W  
NORTHERN VIEW EFFECTIVE 88B  
HLC 1220 PRIDE 263A  
SCHIEFELBEIN EFFECTIVE 61  
NORTHERN VIEW TIBBIE 83T  
WILLOWVIEW PIONEER 6X  
BELL BLACK LUCY 27Y

EPDS	BW	WW	YW	MILK	CE	MCE
	3.4	56	100	21	1	5

BW:	SOTW:	EOTW:	ADG:	WPDA:	PROJ WT:	AOD:
86 lbs.	830 lbs.	1122 lbs.	3.48 lbs.	3.25 lbs.	1272 lbs.	3

A well balanced Jasper Bell Good News 3H son, a bull we are using on both heifers and cows. He is a moderate framed, thick made, docile bull. 35K displays a nice muscle pattern with eye appeal.



45

BELL 3H **GOOD NEWS** 45K

Male 2280501 NBK 45K 06/03/2022

BELL BREAKING NEW 9F  
**JASON BELL GOOD NEWS 3H**  
 JASON BELL PRIDE 61E

WERNER FLAT TOP 4136  
**BELL N V BLACKCAP 12H**  
 BELL NV BLACKCAP 13Y

BRUIN BREAKING NEWS 2201  
 BELL BLACK LUCY 16W  
 NORTHERN VIEW EFFECTIVE 88B  
 HLC 1220 PRIDE 263A  
 CONNEALY BLACK GRANITE  
 WERNER LADY 0304  
 BELL NET RETURN 3U  
 BELL N V BLACKCAP 40U

EPDS	BW	WW	YW	MILK	CE	MCE
	1.3	55	102	26	7	9

BW:	SOTW:	EOTW:	ADG:	WPDA:	PROJWT:	AOD:
72 lbs.	816 lbs.	1112 lbs.	3.52 lbs.	3.28 lbs.	1262 lbs.	2

A sound, eye catching Good News 3H son. Starting out with a 72 lb birth weight, he has developed very well. His dam is a moderate framed Werner Flat Top daughter. She did a whale of a job on her first calf!



View the catalogue online at  
[Buyagro.com](http://Buyagro.com)

# PEAK

## VETERINARY HEALTH

#2 Brock Drive PO Box 1143  
 32nd Ave – Brock Industrial Park  
 1 mile south of Johnstones Auction  
 Moose Jaw, SK. S6H 4P8  
 (306) 692-4800  
[peakvet@sasktel.net](mailto:peakvet@sasktel.net)

Dr. Terry Goslin      Dr. Tyson Buyer  
 Dr. Laurie Zemlak      Dr. Hanna Hone  
 Dr. Laura Ferguson

NOW ACCEPTING NEW CLIENTS!

Peak is a merged practice between Western Veterinary Services Moose Jaw and Ranchland Veterinary Services Carnduff. We are excited to offer in clinic and on farm advanced large animal reproduction including IVF, conventional flushing, and owners use semen collection as well as mobile large animal emergency and routine services. In clinic small animal medicine, surgery, and emergency services are now also available.





Welcome to 26th Annual Acquire the Angus Advantage (AAA) Bull Sale. We are very pleased with the group of bulls we have to offer this year. In the past number of years our focus is to introduce new genetics through artificial insemination. Breeding season begins with about 4 weeks of AI. The results of this effort is 9 very good bulls in our offering. Our walking bull owned with Caragata Ranch, Peak Dot Roughrider 2063G, continues to impress with his chill demeanour. He is siring high selling bulls for both Ryan and I. And his heifers are top end replacements. We would like to thank our past customers... many which we were able to mention in or footnotes of the dams of this years offering. I am always pleased to discuss your bull needs, please give me a call.



46

HI LOW **GROWTH FUND** 1K

Male 2283728 HTD 1K 29/01/2022

BASIN PAYWEIGHT 1682  
**DEER VALLEY GROWTH FUND**  
DEER VALLEY RITA 36113

PEAK DOT EASY DECISION 114C  
**HILOW LADY ANN 77E**  
HILOW LADY ANN 109C

BASIN PAYWEIGHT 006S  
21AR O LASS 7017  
PLATTEMERE WEIGH UP K360  
DEER VALLEY RITA 9457  
BUSH'S EASY DECISION 98  
PEAK DOT LADY 810A  
HILOW TIGER 1X  
HILOW LADY ANN 98X

EPDS	BW	WW	YW	MILK	CE	MCE
	1.9	70	133	30	7	11
BW:	SOTW:	EOTW:	ADG:	WPDA:	PROJ WT:	AOD:
70 lbs.	1076 lbs.	1392 lbs.	3.76 lbs.	3.71 lbs.	1542 lbs.	5

- Gestation 262 days
- October 11 actual weaning weight 900 lbs, adjusted 205 day weight 737 lbs
- Orphaned shortly after birth. Dam ingested 3" piece of wire
- Bottle feed for 4 weeks then grafted onto 9 year old cow

- First of our 8 Deer Valley Growth Fund sons. Deer Valley Growth Fund epd's are top 10% of breed for calving ease. Top 1% for weaning, yearling, and carcass weight. Top 1% for milk
- Maternal brother sold to Lyles Hughes, 1 heifer retained



47

HI LOW **GROWTH FUND** 4K

Male 2279518 HTD 4K 01/02/2022

BASIN PAYWEIGHT 1682  
**DEER VALLEY GROWTH FUND**  
DEER VALLEY RITA 36113

KG SOLUTION 0018  
**HI LOW LADY ANN 6F**  
HILOW LADY ANN 76C

BASIN PAYWEIGHT 006S  
21AR O LASS 7017  
PLATTEMERE WEIGH UP K360  
DEER VALLEY RITA 9457  
MOGCK SURE SHOT  
KG RITO LADY 8724  
HILOW IDEAL 43A  
HILOW LADY ANN 2A

EPDS	BW	WW	YW	MILK	CE	MCE
	-0.3	75	136	28	10	11
BW:	SOTW:	EOTW:	ADG:	WPDA:	PROJ WT:	AOD:
78 lbs.	1000 lbs.	1330 lbs.	3.93 lbs.	3.58 lbs.	1480 lbs.	4

- Gestation 275 days
- October 11 actual weaning weight 854 lbs, adjusted 205 day weight 726 lbs

- Calving ease on dam side, KG Solution top 1% for birth weight
- Maternal brother sold to Cynosure Land and Cattle, 2 heifers retained





**48**

HI LOW **GROWTH FUND** 7K

Male 2278384 HTD 7K 30/01/2022

BASIN PAYWEIGHT 1682  
**DEER VALLEY GROWTH FUND**  
DEER VALLEY RITA 36113

HILOW TIGER 1X  
**HI LOW ERICA 3E**  
HILOW ERICA 29X

BASIN PAYWEIGHT 006S  
21AR O LASS 7017  
PLATTEMERE WEIGH UP K360  
DEER VALLEY RITA 9457  
HF TIGER 5T  
MVF TIBBIE 108U  
HOWE MAGIC 28R  
HILOW ERICA 79S

EPDS	BW	WW	YW	MILK	CE	MCE
	0.4	65	120	30	8	9
BW:	SOTW:	EOTW:	ADG:	WPDA:	PROJ WT:	AOD:
82 lbs.	1006 lbs.	1376 lbs.	4.40 lbs.	3.68 lbs.	1526 lbs.	5

- Gestation 276 days
- October 11 actual weaning weight 868 lbs, adjusted 205 day weight 718 lbs
- Our highest gaining bull, probably making up for the fact he was orphaned late August. Dam possibly struck by lightning.
- Retained all 3 maternal sisters
- Co-owned with Lindsay Curtis

**49**

HI LOW **GROWTH FUND** 19K

Male 2279527 HTD 19K 06/02/2022

BASIN PAYWEIGHT 1682  
**DEER VALLEY GROWTH FUND**  
DEER VALLEY RITA 36113

HILOW TIGER 1X  
**HI LOW PRIDE 131C**  
HILOW PRIDE 75Y

BASIN PAYWEIGHT 006S  
21AR O LASS 7017  
PLATTEMERE WEIGH UP K360  
DEER VALLEY RITA 9457  
HF TIGER 5T  
MVF TIBBIE 108U  
HILOW MAGIC 68W  
HILOW PRIDE 84S

EPDS	BW	WW	YW	MILK	CE	MCE
	1.5	60	114	30	6	8
BW:	SOTW:	EOTW:	ADG:	WPDA:	PROJ WT:	AOD:
89 lbs.	1004 lbs.	1302 lbs.	3.55 lbs.	3.55 lbs.	1452 lbs.	7

- Gestation 279 days
- October 11 actual weaning weight 810 lbs, adjusted 205 day weight 687 lbs
- Maternal brothers sold to Chris Forsberg and Don Sauer







# 50

## HI LOW GROWTH FUND 21K

Male 2279532 HTD 21K 08/02/2022

BASIN PAYWEIGHT 1682  
**DEER VALLEY GROWTH FUND**  
 DEER VALLEY RITA 36113

PA FORTITUDE 2500  
**HI LOW ESTON ANNE 18E**  
 HILOW ESTON ANNE 23T

BASIN PAYWEIGHT 006S  
 21AR O LASS 7017  
 PLATTEMERE WEIGH UP K360  
 DEER VALLEY RITA 9457  
 GAR-EGL PROTEGE  
 G G CLARA 0171  
 HILOW SUPER X 37N  
 HILOW ESTON ANNE 36P

EPDS	BW	WW	YW	MILK	CE	MCE
	-0.1	64	115	26	9	12

BW:	SOTW:	EOTW:	ADG:	WPDA:	PROJ WT:	AOD:
84 lbs.	900 lbs.	1190 lbs.	3.45 lbs.	3.26 lbs.	1340 lbs.	5

- Gestation 281 days
- October 11 actual weaning weight 772 lbs, adjusted 205 day weight 662 lbs
- Maternal brother sold to Clayton Grant



# 51

## HI LOW GROWTH FUND 36K

Male Twin 2279546 HTD 36K 14/02/2022

BASIN PAYWEIGHT 1682  
**DEER VALLEY GROWTH FUND**  
 DEER VALLEY RITA 36113

MOHNEN SOUTH DAKOTA 402  
**HI LOW ERICA 33D**  
 HILOW ERICA 29X

BASIN PAYWEIGHT 006S  
 21AR O LASS 7017  
 PLATTEMERE WEIGH UP K360  
 DEER VALLEY RITA 9457  
 MOHNEN DENSITY 730  
 MOHNEN JILT 539  
 HOWE MAGIC 28R  
 HILOW ERICA 79S

EPDS	BW	WW	YW	MILK	CE	MCE
	2.3	68	122	27	3.5	6.5

BW:	SOTW:	EOTW:	ADG:	WPDA:	PROJ WT:	AOD:
77 lbs.	880 lbs.	1136 lbs.	3.05 lbs.	3.16 lbs.	1286 lbs.	6

- Gestation 274 days
- October 11 actual weaning weight 750 lbs, adjusted 205 day weight 654 lbs
- Dam raised twins and weaned 1500 lbs
- Maternal brother sold to Lyle Sandercock, retained only daughter



# 52

## HI LOW GROWTH FUND 45K

Male 2283613 HTD 45K 23/02/2022

BASIN PAYWEIGHT 1682  
**DEER VALLEY GROWTH FUND**  
 DEER VALLEY RITA 36113

PEAK DOT EASY DECISION 114C  
**HI LOW LADY ANN 35E**  
 HI LOW LADY ANN 71C

BASIN PAYWEIGHT 006S  
 21AR O LASS 7017  
 PLATTEMERE WEIGH UP K360  
 DEER VALLEY RITA 9457  
 BUSHES EASY DECISION 98  
 PEAK DOT LADY 810A  
 HILOW TIGER 1X  
 HILOW LADY ANN 43T

EPDS	BW	WW	YW	MILK	CE	MCE
	1	70	129	30	8	11

BW:	SOTW:	EOTW:	ADG:	WPDA:	PROJ WT:	AOD:
86 lbs.	930 lbs.	1216 lbs.	3.40 lbs.	3.47 lbs.	1366 lbs.	5

- Gestation 282 days
- October 11 actual weaning weight 792 lbs, adjusted 205 day weight 718 lbs
- Maternal brother sold to Keep Ranch



53

HI LOW **GROWTH FUND** 48K

Male 2283617 HTD 48K 24/02/2022

BASIN PAYWEIGHT 1682  
**DEER VALLEY GROWTH FUND**  
 DEER VALLEY RITA 36113

DMM INTERNATIONAL 54D  
**HI LOW ESTON ANNE 35F**  
 HILOW ESTON ANNE 9X

BASIN PAYWEIGHT 006S  
 21AR O LASS 7017  
 PLATTEMERE WEIGH UP K360  
 DEER VALLEY RITA 9457  
 S A V INTERNATIONAL 2020  
 DMM BLACKBIRD 105A  
 DLD 4R NEW ELIXIR 66U  
 HILOW ESTON ANNE 24U

EPDS	BW	WW	YW	MILK	CE	MCE
	2.4	67	121	28	5	10

BW:	SOTW:	EOTW:	ADG:	WPDA:	PROJ WT:	AOD:
84 lbs.	954 lbs.	1268 lbs.	3.74 lbs.	3.63 lbs.	1418 lbs.	4

- Gestation 280 days
- October 11 actual weaning weight 798 lbs, adjusted 205 day weight 741 lbs
- This is youngest of our Deer Valley Growth Fund sons. They are shorter gestation, moderate birthweight with impressive weaning and yearling weights... pretty much as advertised by Growth Fund's EPD's.



54

HI LOW **JUSTIFIED** 23K

Male 2279534 HTD 23K 08/02/2022

CONNEALY JUDGMENT  
**KG JUSTIFIED 3023**  
 KG MISS MAGIC 1443

BASIN EXCITEMENT  
**HILOW PRIDE 33C**  
 HILOW PRIDE 23X

CONNEALY CONSENSUS 7229  
 ENTRINE OF CONANGA 9876  
 SITZ WISDOM 481T  
 KG MISS MAGIC 3528  
 BASIN EXPEDITION R156  
 BASIN LADY S532 AK  
 HILOW FIRST EDITION 1U  
 HILOW PRIDE 4K

EPDS	BW	WW	YW	MILK	CE	MCE
	-2.6	49	88	28	13	10

BW:	SOTW:	EOTW:	ADG:	WPDA:	PROJ WT:	AOD:
73 lbs.	936 lbs.	1224 lbs.	3.43 lbs.	3.35 lbs.	1374 lbs.	7

- Gestation 272 days
- October 11 actual weaning weight 800 lbs, adjusted 205 day weight 681 lbs
- Calving ease on both sides of the pedigree. Kg Justified is in the breeds top 1% for birthweight. Dam, 33C consistently calves early
- Maternal brothers sold to Corey Danyliw, Rocky Lake Ranch, Kenossee Park Ranch, we retained 1 son for use on heifers.



Watch  
 &  
 Bid  
 WITH DLMS

**EARL GREY**  
 VETERINARY SERVICES

**Dr. Justin Kristjansson**  
**Dr. Samantha Tetlock**



• Bovine • Equine • Small Ruminant • Pets

Find us on Facebook & Instagram!

109 Assiniboia Avenue  
 Earl Grey, SK S0G 1J0  
 T: (306) 939-2264  
 myegvets@sasktel.net





56

56

HI LOW **ROUGH RIDER** 29K

Male 2279541 HTD 29K 11/02/2022

ELLINGSON ROUGHRIDER 4202  
**PEAK DOT ROUGHRIDER 2063G**  
PEAK DOT BARDOLIA 482B

S A V ANGUS VALLEY 1867  
**JL LUCINDA 5290**  
JL LUCINDA 8010

CONNEALY EARNAN 076E  
EA BLACKCLASS 8914  
PEAK DOT BOLD 204U  
BARDOLIA OF PEAK DOT 624U  
S A V IRON MOUNTAIN 8066  
S A V MAY 2397 CAF  
DDA EMBLAZON 27C  
KBJ LUCINDA 433M

EPDS	BW	WW	YW	MILK	CE	MCE
	5.3	58	98	22	-5	3
BW:	SOTW:	EOTW:	ADG:	WPDA:	PROJ WT:	AOD:
102 lbs.	1036 lbs.	1276 lbs.	2.86 lbs.	3.52 lbs.	1426 lbs.	7

- Gestation 284 days
- October 11 actual weaning weight 860 lbs, adjusted 205 day weight 744 lbs
- Dam has Elite/Premier Designation with WW ratio of 106
- Retained 4 heifers



57

57

HI LOW **ROUGH RIDER** 38K

Male 2283594 HTD 38K 23/02/2022

ELLINGSON ROUGHRIDER 4202  
**PEAK DOT ROUGHRIDER 2063G**  
PEAK DOT BARDOLIA 482B

WILL ROLE MODEL  
**HILOW QUEEN MOTHER 57A**  
HILOW QUEEN MOTHER 1N

CONNEALY EARNAN 076E  
EA BLACKCLASS 8914  
PEAK DOT BOLD 204U  
BARDOLIA OF PEAK DOT 624U  
CONNEALY PACKER 547  
WILL HENRIETTA PRIDE 113A  
C A FUTURE DIRECTION 5321  
HILOW QUEEN MOTHER 2L

EPDS	BW	WW	YW	MILK	CE	MCE
	1.5	49	90	21	4	8
BW:	SOTW:	EOTW:	ADG:	WPDA:	PROJ WT:	AOD:
80 lbs.	980 lbs.	1312 lbs.	3.95 lbs.	3.75 lbs.	1462 lbs.	9

- Gestation 275 days
- October 11 actual weaning weight 764 lbs, adjusted 205 day weight 691 lbs
- 1 heifer sold to Sheidagan Angus, 4 heifers retained
- Paternal brother was our high seller last year to Sunny Grove Angus





RED TRIPLE H LITTLE DEEP 103G  
Sire of Lots: 100, 101, and 103

We decided to once again have our Red Angus bulls in the Sale this year. As I sat down to write the footnotes on this strong set of Red Bulls, I realized from this group of 7 cows we have sold 23 bulls and 3 heifers at Red Roundup. There are also 2 **Canadian Angus Association Elite Dams** in this group.

# 100

## RED TRIPLE H DEEP 71K

Male 2268638 HRA 71K 04/03/2022

RED MINBURN LITTLE DEEP 7E  
**RED TRIPLE H LITTLE DEEP 103G**  
RED TRIPLE H LANA 29A

RED VIKSE DA FULLY LOADED 88X  
**RED TRIPLE H KRISTINE 83A**  
RED YEO KRISTY 34H

RED TR LITTLE DEEP 285B  
RED KBJ LASSIE 405S  
RED VIKSE DA FULLY LOADED 88X  
RED YEO LANA 7H  
RED TER-RON FULLY LOADED 540R  
RED VIKSE DYN 536T  
RED TOWAW ZAMA 39C  
RED YEO CRISTY 2

EPDS	BW	WW	YW	MILK	CE	MCE
	-0.1	42	64	24	4	7

BW:	SOTW:	EOTW:	ADG:	WPDA:	PROJ WT:	AOD:
71 lbs.	886 lbs.	1128 lbs.	2.88 lbs.	3.31 lbs.	1278 lbs.	9



100

We start our Red offering off with this Triple H Little Deep 103G son with an 82 lb birth weight that could work in the Heifer pen. Smooth made, long spined, good footed and like all Little Deep 103G sons he has a great haircoat and good set of testicles. This will be the 3rd bull to sell that his Fully Loaded 88X Dam 83A has raised, she traces back to Zama Pine 37S. Could be used on Heifers and has enough performance for the cows.  
**205 WT 757 EPD'S: CE 4 BW -0.1**

# 101

## RED TRIPLE H DP KONGER 28K

Male 2268628 HRA 28K 15/02/2022

RED MINBURN LITTLE DEEP 7E  
**RED TRIPLE H LITTLE DEEP 103G**  
RED TRIPLE H LANA 29A

RED TRIPLE H DODGE CITY 82Y  
**RED TRIPLE H DODGE KRISTY 6A**  
RED TRIPLE H KRISTY RAND 44Y

RED TR LITTLE DEEP 285B  
RED KBJ LASSIE 405S  
RED VIKSE DA FULLY LOADED 88X  
RED YEO LANA 7H  
RED WHEEL DODGE CITY 3U  
RED HHH CAMMY 74T  
RED RJ MITCHELL EQUALIZE 123S  
RED YEO KRISTY 17R

EPDS	BW	WW	YW	MILK	CE	MCE
	3.1	55	91	28	-2	3

BW:	SOTW:	EOTW:	ADG:	WPDA:	PROJ WT:	AOD:
98 lbs.	1000 lbs.	1276 lbs.	3.29 lbs.	3.56 lbs.	1426 lbs.	9



101

Lots of performance in this Little Deep son HRA 28K, born Feb 15th and weighed 904 on Oct 11th for a **205 WT OF 793 LBS**. He has a **WPDA OF 3.56 LBS** and has an **ADJUSTED YWT OF 1292 LBS**. Deep bodied, tank of a bull with a wide top, good hip, dark hooves and typical of a Little Deep 103G son he has a great hair coat with big nuts. This will be the 5th bull to sell that his Dodge City Dam 6A has raised and we sold 1 daughter to a Purebred Breeder in BC and have 1 in our Herd. His calves will crush the scale down in Fall. Projected Sale day weight **1426 LBS**.  
**WWT TOP 7% YWT TOP 8% MILK TOP 15%**





102

102

RED TRIPLE H **JOHN WICKED** 14K

Male 2268604 HRA 14K 31/01/2022

RED U-2 RECKONING 149A  
**RED SIX MILE JOHN WICK 882E**  
RED SIX MILE & CO GLORIA 29A

RED DKF RIGHT TIME 142W  
**RED TRIPLE H PRIDE 26Y**  
RED HHH PRIDE 133W

RED U-2 RECON 192Y  
RED U-2 ANEXA 271Y  
RED 6 MILE FULL THROTTLE 171T OSF  
RED SIX MILE GLORIA 746W  
DKF MR. RIGHT TIME 7S  
RED DKF MISS RYEBURN 123L  
RED DKF BEEF 36T  
RED DEER RANGE PRIDE 792T



EPDS	BW	WW	YW	MILK	CE	MCE
	3.3	63	103	29	0	8
BW:	SOTW:	EOTW:	ADG:	WPDA:	PROJ WT:	AOD:
98 lbs.	1080 lbs.	1362 lbs.	3.36 lbs.	3.65 lbs.	1512 lbs.	11

Here's a Six Mile John Wick 882E son that packs a punch, we named him correctly, Wicked growth to this Fella. Born Jan 31st and weighed 920 lbs at weaning on Oct 11th to give him a 205 WT of 832 lbs, he has a **WPDA OF 3.65 LBS** and an **ADJUSTED YWT OF 1359 LBS**. Super long bodied (check out pasture pic), square made, good footed, big nutted and a Stud best describe this bull. His **CAA ELITE DAM HRA 26Y** has done a fantastic job on this guy at 11 years old, not surprising though as we have sold 2 of her daughters at Red Roundup and have 2 in our Herd. She's still going strong at 12 with a Respect son on the ground by Ai, this will be her 2nd bull to sell. If your looking for a Red Angus bull with Big Time Performance and an Outstanding Dam, here he is. Projected Sale weight **1512 LBS**.  
**WWT TOP 1% YWT TOP 2% MILK TOP 10%**

**FLAMAN**

**Rob Ermel**  
Ag Sales

T: 1.306.726.4403 F: 1.306.726.4409  
C: 1.306.550.7898 TF: 1.888.235.2626

Box 280 Hwy 6 N  
Southey, SK S0G 4P0  
rob.ermel@flaman.com

[www.flaman.com](http://www.flaman.com)

Agriculture • Grain Systems • Trailers  
Service, Parts & Rentals



**Leroy Steinhubl**

Select Sires & Semex  
Beef Representative  
Nitrogen, Supplies & A.I. Breeding Services  
Cell: 306-536-1784  
Email: [leroy\\_steinhubl@outlook.com](mailto:leroy_steinhubl@outlook.com)  
Box 157 Balgonie, SK S0G 0E0



103

RED TRIPLE H **DP KOLTER** 74K

Male 2268642 HRA 74K 05/03/2022

RED MINBURN LITTLE DEEP 7E  
**RED TRIPLE H LITTLE DEEP 103G**  
RED TRIPLE H LANA 29ARED VIKSE DA FULLY LOADED 88X  
**RED TRIPLE H LULU 56B**  
RED HHH LUCY 84URED TR LITTLE DEEP 285B  
RED KBJ LASSIE 405S  
RED VIKSE DA FULLY LOADED 88X  
RED YEO LANA 7H  
RED TER-RON FULLY LOADED 540R  
RED VIKSE DYN 536T  
RED DEER RANGE CACHE 99P  
RED DEER RANGE LUCY 714R

EPDS	BW	WW	YW	MILK	CE	MCE
	1.8	58	90	27	1	5
BW:	SOTW:	EOTW:	ADG:	WPDA:	PROJ WT:	AOD:
93 lbs.	1010 lbs.	1244 lbs.	2.79 lbs.	3.66 lbs.	1394 lbs.	8



103

Here's another Little Deep 103G son with impressive performance that was a pasture favourite, dark blood red, deep ribbed, wide topped and you guessed it great hair coat and big nuttied. Born Mar. 5th and weighed 840 lbs at weaning on Oct. 11th to give him a **205 WT OF 836 LBS** and **WPDA OF 3.66 LBS** with an **ADJUSTED YWT OF 1312 LBS**. His Fully Loaded 88x Dam HRA 56B has just achieved **CAA ELITE** status. Every daughter has been a keeper, with 1 sold at the 2021 Red Roundup Sale, 1 at the Frontline Sale and we have 2 in our Herd. His Sire Little Deep 103G is a bull that we showed at Agribition and the Angus Sweepstakes, also has a **205 WT OF 852 LBS** so performance is in the blood. If you sell your calves in Fall this fella will definitely add some pounds to your next calf crop and you will want to keep all his daughters. Projected Sale weight **1394 LBS**.  
**WWT TOP 4% YWT TOP 10% MILK TOP 20%**

104

RED TRIPLE H **KLINTON** 85K

Male 2289239 HRA 85K 11/03/2022

TRIPLE H INTUITION 37E  
**TRIPLE H RC INTUITION 19H**  
RED SUNSET RIDGE XANDRA 1XRED C-BAR ANTICIPATION 101W  
**RED KENRAY BAYBERRY 10C**  
RED KENRAY BAYBERRY 99ATRIPLE H INTUITION 14B  
TRIPLE H LANNA 106B  
RED SIX MILE SAKIC 832S  
RED SUNSET RIDGE URIKA 11U  
RED CROWFOOT OLE'S OSCAR 2042M  
RED BROWN MS ABIGRACE L7730  
RED YY DESIGNER 63X  
RED SIX MILE BAYBERRY 222P

EPDS	BW	WW	YW	MILK	CE	MCE
	0.6	43	62	27	5	9
BW:	SOTW:	EOTW:	ADG:	WPDA:	PROJ WT:	AOD:
81 lbs.	992 lbs.	1170 lbs.	2.12 lbs.	3.50 lbs.	1320 lbs.	7



104

This stylish, smooth made, long bodied, good hipped, wide topped stud is sired by Triple H Intuition 19H, a Blk/Red Carrier bull that goes back to Triple H Intuition 14B and Six Mile Sakic. Very interesting combination here. 85K will be the 4th bull to sell that his C-Bar Anticipation Dam 10c has raised. Here's a chance to inject some Top notch Black genetics into your Red Herd. With a BWT of 81 lbs and a **205 WT OF 760 LBS** this guy will work in the heifer pen or on cows and you'll have some pounds to sell in Fall.  
**CE 5 BW 0.5**



RED TRIPLE H KLINTON 85K



From Left to Right: 82K, 85K, 20K, 14K



Summer pic of Lot 103 and Dam HRA 56B

Join Us for Lunch at Noon!  
Sponsored by FCC





# 105

RED TRIPLE H **INTUITION** 20K

Male	2289238	HRA 20K	12/02/2022			
TRIPLE H INTUITION 37E		TRIPLE H INTUITION 14B				
TRIPLE H RC INTUITION 19H		TRIPLE H LANNA 106B				
RED SUNSET RIDGE XANDRA 1X		RED SIX MILE SAKIC 832S				
		RED SUNSET RIDGE URIKA 11U				
RED TRIPLE H HITCHED 44B		RED SVR HITCH 34Z				
RED TRIPLE H BELLA 15D		RED TRIPLE H CHEROKEE 114X				
RED VALLEYHILLS LARKABELL 46P		RED SPUR HOOD 60G				
		RED VALLEYHILLS LARKABELLE 46J				
EPDS	BW	WW	YW	MILK	CE	MCE
	0.4	43	63	24	6	10
BW:	SOTW:	EOTW:	ADG:	WPDA:	PROJ WT:	AOD:
82 lbs.	920 lbs.	1132 lbs.	2.52 lbs.	3.14 lbs.	1282 lbs.	6

Another Triple H Intuition 19H son here out of HRA Bella 15D who's mother was a **PREMIER DAM**. This will be her 3rd Bull to sell so she knows how to raise them. With an 82 lb birth weight and a nice small head this long spined, good footed Fella with a great hair coat and smooth shoulders should work well on heifers or cows.

CE 6 BW 0.4



# 106

RED TRIPLE H **LITTLE DEEP** 18K

Male

2268688

HRA 18K

11/02/2022

RED MINBURN LITTLE DEEP 7E

RED TRIPLE H LITTLE DEEP 103G

RED TRIPLE H LANA 29A

RED VIKSE DA FULLY LOADED 88X

RED TRIPLE H CHRISTA 3A

RED HHH CHRISTA 82W

RED TR LITTLE DEEP 285B

RED KBJ LASSIE 405S

RED VIKSE DA FULLY LOADED 88X

RED YEO LANA 7H

RED TER-RON FULLY LOADED 540R

RED VIKSE DYN 536T

RED DKF BEEF 36T

RED YEO CHRISTA 82T

EPDS	BW	WW	YW	MILK	CE	MCE
	-0.8	33	54	23	12	11

BW:	SOTW:	EOTW:	ADG:	WPDA:	PROJ WT:	AOD:
72 lbs.	844 lbs.	1108 lbs.	3.18 lbs.	3.06 lbs.	1258 lbs.	9

Here's a good option for your heifers, he's dark red, has a small head with smooth shoulders, long bodied, good hiped rascal that has a calving ease # of 12 (**TOP 4% OF THE BREED**). To top it off he's a Red Triple H Little Deep 103G son with a 72 lb birth weight. His Dam HRA 3A is a Fully Loaded 88X daughter that knows how to get it done, this will be her 5th bull to sell and both her daughters are working for the good folks at Dual-E. If your planning on breeding some heifers this spring don't miss out on this guy.

CE 12 BW -0.8

**BRENDON STECYK**  
DYSART, SK  
306-331-9869

**AUTOMOTIVE REPAIR**

**Scott Macknak**  
Owner

**Box 153**  
Dysart, SK  
S0G 1H0

**P: 306-432-2003**  
**C: 306-332-7140**  
**F: 306-432-2004**  
**E: sms@sasktel.net**

**www.smsmanufacturing.ca**



# SUPPLEMENT WITH THE **BEST.**



Enhanced Digestibility • Higher Plane of Herd Health • Improved Performance  
Controlled Consumption • Quicker Breed Back • Boost Bull and Cow Fertility  
Minimize Animal Stress • Stronger Immune System • Better Conception Rates



Contact your local dealer today!

**Earl Grey Vet**  
Justin Kristjansson  
(306) 939-2264

**Kattle Kountry**  
Les Eastmond  
(306) 630-6225

**Bulyea Co-op**  
Brian Gorrill  
(306) 725-4931

**Redcoat Ag Inc**  
Pangman, SK  
Doug Lewgood  
(306) 442-7400

**[www.OLSTUBS.com](http://www.OLSTUBS.com)**





Perfect for working in large plants, feedlots, municipal use or on the ranch moving bales the Weidemann 9080 wheel loader is ready for you to climb aboard! With 136 HP and a lift capacity of 11,622 lbs its time to let someone else do the heavy lifting.

**#2 South Plains Rd | Emerald Park, SK | 306-781-1077**

## NOTES



# TERMS & CONDITIONS

## TERMS...

The terms of the sale are cash or cheque, payable at par at the sale location. The right of property shall not pass until after settlement has been made; no invoicing on buyers in attendance unless previous arrangements have been made. Every animal sells to the highest bidder and in cases of disputes, the auctioneer's decision will be final.

Announcements made from the auction block will take precedence over the printed matter in the catalogue. Current exchange rates will be announced sale day. All monies are in Canadian funds.

## CERTIFICATE OF REGISTRATION...

Each animal will carry papers issued by the Canadian Angus Association. A certificate of registry duly transferred will be furnished to the buyer for each animal after payment has been made.

## PEDIGREE ESTIMATES...

Pedigree Estimates (PE) are created on the projected mating of the animal's sire and dam based on averages of the two, creating estimated values that do not hold the same accuracy of actual EPDs issued from the association and should be used as such.

## HEALTH...

All animals in the sale have met all necessary health requirements.

## GUARANTEE...

Each animal becomes the purchaser's risk immediately after the animal is sold. All animals in this sale will be sold under the terms and guarantees set forth by the Canadian Angus Association with regard to health, freedom from defects and from both reproductive and specific genetic unsoundness.

## INSURANCE...

We strongly recommend that insurance is purchased for full value.

## PHONE, MAIL & WIRE BIDS...

Bidders unable to attend the sale may phone, wire or mail their bids and instructions to the sale manager, auctioneer or special representatives. Bids must be received in sufficient time prior to the sale.

## ERRORS...

All announcements at sale time, written or oral, supersede any written material in the catalogue.

## LIABILITIES...

All persons attend the sale at their own risk. The seller, facility owner and sale manager assume no liability, legal or otherwise, for any accidents that occur. It is understood that T Bar C Cattle Co. (2013) Ltd. is acting only as a medium between buyer and seller and is not responsible for any obligations to collect or enforce collection of any monies between parties and any legal action that may, in extreme cases, be taken must be between buyer and seller. T Bar C Cattle Co. (2013) Ltd. assumes no responsibility of any credit extended by the seller to the buyer. The buyer must look to the seller for fulfillment of all guarantees and representations made hereunder.

## DELIVERY...

Delivery can be arranged at a cost of \$100 per bull within 300 km of Moose Jaw. If you are over 300 km we can assist you in making travel arrangements at cost.

## *We are proud to support the* **Canadian Angus Foundation** **15 for 50 Program**

With **YOUR** help we will continue to further the Foundation's mission and the breed.

**15%**  
of a lot  
means  
a lot...

In 2019 over \$80,000 was **INVESTED** in member education, awards, bursaries and youth scholarships.

\$180,000 invested in **ANGUS** research over the last three years leveraged an additional \$360,000 in grant funding.

\$60,000+ has been invested in history and archives, including the 2019 Canadian Angus history book.

*If you are interested in giving back or learning more about this new initiative, please contact Belinda Wagner, Canadian Angus Foundation Executive Director at 306-757-6133 or email [bwagner@cdnangus.ca](mailto:bwagner@cdnangus.ca). You can also visit the Canadian Angus Foundation website at [www.cdnangus.ca/foundation/](http://www.cdnangus.ca/foundation/).*



*The Canadian Angus Foundation functions to preserve and expand the Angus breed for future generations through education, youth development, scientific and market research, and historical preservation and restoration. The Canadian Angus Foundation was incorporated in 1993 and is the charitable arm of the Canadian Angus Association. Donations are tax deductible.*



Return Undeliverable  
Canadian Addresses To:  
T Bar C Cattle Co. Ltd.  
Box 2330  
Warman, SK S0K 4S0



RETURN POSTAGE GUARANTEED  
PORT DE RETOUR GARANTI

Cottonwood Angus



Nu-Horizon Angus



Willowview Angus



Hi Low Angus



Triple H Angus



Gutzke Ranch



Bell Angus



4K Angus



Created by  
*Today's*  
Publishing